



CITRUS MATURITY TEST RESULTS AND FRUIT SIZE

DECEMBER FORECAST

Cooperating with the Florida Department of Agriculture & Consumer Services
2290 Lucien Way, Suite 300, Maitland, FL 32751
(407) 648-6013 · (407) 648-6029 FAX · www.nass.usda.gov/fl

December 11, 2012

All Oranges Down 5 Percent from October
Non-Valencia Oranges Production Down 9 Percent
Valencia Orange Production Down 1 Percent
All Grapefruit Production Down 11 Percent
All Tangerine Production Down 14 Percent
Tangelo Production Down 8 Percent
FCOJ Yield Unchanged at 1.61 Gallons per Box (42° Brix)

FORECAST DATES	–	2012-2013 SEASON
[Beginning January 2013 release time will be 12:00 p.m. EDT]		
January 11, 2013		April 10, 2013
February 8, 2013		May 10, 2013
March 8, 2013		June 12, 2013
		July 11, 2013

Citrus Production by Type and State – United States

Crop and State	Production ¹			2012-2013 Forecasted Production ¹	
	2009-2010 (1,000 boxes)	2010-2011 (1,000 boxes)	2011-2012 (1,000 boxes)	October (1,000 boxes)	December (1,000 boxes)
Non-Valencia Oranges²					
Florida.....	68,600	70,300	74,200	74,000	67,000
California ³	42,500	48,000	45,500	46,500	46,500
Texas ³	1,360	1,700	1,108	1,130	1,130
United States.....	112,460	120,000	120,808	121,630	114,630
Valencia Oranges					
Florida.....	65,100	70,200	72,400	80,000	79,000
California ³	15,000	14,500	13,500	13,000	13,000
Texas ³	275	249	311	286	286
United States.....	80,375	84,949	86,211	93,286	92,286
All Oranges					
Florida.....	133,700	140,500	146,600	154,000	146,000
California ³	57,500	62,500	59,000	59,500	59,500
Texas ³	1,635	1,949	1,419	1,416	1,416
United States.....	192,835	204,949	207,019	214,916	206,916
Grapefruit					
Florida-All.....	20,300	19,750	18,850	20,300	18,000
White.....	6,000	5,850	5,350	5,800	5,000
Colored.....	14,300	13,900	13,500	14,500	13,000
California ³	4,500	4,310	4,400	4,000	4,000
Texas ³	5,600	6,300	4,800	5,280	5,280
United States.....	30,400	30,360	28,050	29,580	27,280
Lemons³					
California.....	21,000	20,500	20,500	20,500	20,500
Arizona.....	2,200	2,500	750	1,700	1,700
United States.....	23,200	23,000	21,250	22,200	22,200
Tangelos					
Florida.....	900	1,150	1,150	1,200	1,100
Tangerines					
Florida-All.....	4,450	4,650	4,290	4,400	3,800
Early ⁴	2,250	2,600	2,330	2,400	2,000
Honey.....	2,200	2,050	1,960	2,000	1,800
California ^{3,5}	9,900	10,600	10,900	11,800	11,800
Arizona ^{3,5}	350	300	200	200	200
United States.....	14,700	15,500	15,390	16,400	15,800

¹ Net pounds per box: oranges in California-80 (75 prior to the 2010-2011 crop year), Florida-90, Texas-85; grapefruit in California-80 (67 prior to the 2010-2011 crop year), Florida-85, Texas-80; lemons-80 (76 prior to the 2010-2011 crop year), tangelos-90; tangerines and mandarins in Arizona and California-80 (75 prior to the 2010-2011 crop year), Florida-95.

² Navel and miscellaneous varieties in California. Early (including Navel) and midseason varieties in Florida and Texas. Includes small quantities of tangerines in Texas and Temples in Florida.

³ Estimates carried forward from October

⁴ Fallglo and Sunburst varieties.

⁵ Includes tangelos and tangors.

All Oranges 146.0 Million Boxes

The 2012-2013 Florida all orange forecast released today by the USDA Agricultural Statistics Board is 146.0 million boxes, down 5 percent from October and 600,000 boxes fewer than last season's production. The forecast is comprised of 67.0 million boxes of the non-Valencia oranges (early, midseason, Navel, and Temple varieties) and 79.0 million boxes of the Valencia oranges. The hurricane seasons of 2004-2005 and 2005-2006 have been excluded from the usual 10-year regression analysis and from comparisons of the current season to previous seasons. For those previous 8 seasons, the December forecast has deviated from final production by an average of 3 percent with 6 seasons above and 2 below, with differences ranging from 3 percent below to 4 percent above. All references to "average", "minimum", and "maximum" refer to the previous 8 non-hurricane seasons unless noted.

Non-Valencia Oranges 67.0 Million Boxes

The forecast of non-Valencia production is lowered by 7.0 million boxes to 67.0 million boxes. Current size is near the minimum and projected to remain close to minimum at harvest. Current droppage is steadily increasing and is projected to be highest since the 1969-1970 season. The Navel forecast, included in the non-Valencia forecast, is reduced by 300,000 boxes to 1.9 million boxes. If realized, this utilization will be the lowest since 1984-1985. Final Navel size is near average but final droppage is the highest in any season since 1990-1991.

Valencia Oranges 79.0 Million Boxes

The forecast of Valencia production is lowered by 1.0 million boxes to 79.0 million boxes. Current fruit size is slightly above the minimum and is projected to remain below average. Current droppage is slightly above average and projected to remain near average.

All Grapefruit 18.0 Million Boxes

The forecast of all grapefruit production is reduced by 2.3 million boxes to 18.0 million boxes. The white grapefruit forecast is reduced by 800,000 boxes to 5.0 million boxes. The colored grapefruit forecast is reduced 1.5 million boxes to 13.0 million boxes. White grapefruit current fruit size is below the minimum and droppage is above the maximum. Colored grapefruit fruit size is also below the minimum and droppage is above the maximum. Droppage is projected to be above average at harvest for all varieties.

All Tangerines 3.8 Million Boxes

The forecast of all tangerine production is reduced 600,000 boxes to 3.8 million boxes. The early tangerine forecast (Fallglo and Sunburst) is reduced 400,000 boxes to 2.0 million boxes. The forecast of the later maturing Honey variety is reduced 200,000 boxes to 1.8 million boxes. The decrease in early tangerines is based on record high droppage and record low sizes for the Sunburst variety. Projected Honey fruit size is below average while the droppage rate is above average.

Tangelos 1.1 Million Boxes

The forecast of tangelo production is reduced 100,000 boxes to 1.1 million boxes. Tangelo sizes are below average and droppage is above the maximum and final for the season. Approximately 281 pieces of fruit are required to fill a 1 3/5 bushel box.

FCOJ Yield 1.61 Gallons per Box

The projection for frozen concentrated orange juice (FCOJ) remains 1.61 gallons per box of 42° Brix concentrate. Last season's final yield for all oranges was 1.628480 gallons per box, as reported by the Florida Department of Citrus. Yield projections for the early-midseason and late components will be published in January. All projections of yield assume the processing relationships this season will be similar to those of the past several seasons.

Maturity

Regular bloom fruit samples were collected on November 26-27 from groves on established routes in Florida's five major citrus producing areas and tested November 28-30. All comparisons are made to December 1, 2011. Solids (Brix) levels are lower and acid levels are higher for all fruit types resulting in lower ratios. Unfinished juice per box is higher for white and colored grapefruit and lower for all orange types. Solids per box are lower for all orange types but higher for both grapefruit types.

Indian River grapefruit has higher acid and Brix levels resulting in lower ratios when compared to other areas. Unfinished juice per box is lower for white grapefruit and higher for colored grapefruit. Solids per box are higher for all orange and grapefruit types in the Indian River District when compared to the other areas.

Forecast Components, by Variety — Florida: December 2012

[Survey data is considered final in December for Navels, January for early-midseason oranges, February for grapefruit, and April for Valencias]

Type	Bearing trees (1,000 trees)	Fruit per tree (number)	Droppage (percent)	Fruit per box (number)
ORANGES				
Early-midseason.....	23,741	1,032	17	275
Navel.....	1,013	409	27	137
Valencia.....	32,049	661	16	220
GRAPEFRUIT				
White.....	1,314	550	19	122
Colored.....	3,581	492	17	125

Citrus Unadjusted Maturity Tests — Florida: 2011-2012 and 2012-2013

[Averages of regular bloom fruit from sample groves. Juice and solids per box are unadjusted and not comparable to juice processing plant test results. All samples were run through an FMC 091 machine using mechanical pressure only. This machine utilizes a .040 short strainer and standard 5/8 inch orifice tube. The beam settings are also identical to past tests and no restrictors are used]

Fruit type (number of groves) test date	Acid		Solids (Brix)		Ratio		Unfinished juice per box		Solids per box	
	2011-2012	2012-2013	2011-2012	2012-2013	2011-2012	2012-2013	2011-2012	2012-2013	2011-2012	2012-2013
	(percent)	(percent)	(percent)	(percent)			(pounds)	(pounds)	(pounds)	(pounds)
ORANGES										
Early (106-113)										
Sep 1.....	1.38	1.24	9.55	9.37	7.05	7.66	45.09	46.47	4.31	4.35
Oct 1.....	0.98	0.98	9.91	9.51	10.31	9.87	49.58	47.54	4.91	4.52
Nov 1.....	0.77	0.77	10.48	10.24	14.02	13.60	50.65	51.42	5.31	5.26
Dec 1.....	0.71	0.73	11.23	10.78	16.07	14.99	51.56	51.54	5.78	5.56
Midseason (52-55)										
Sep 1.....	1.54	1.41	9.38	9.35	6.19	6.77	45.69	45.84	4.28	4.28
Oct 1.....	1.11	1.19	9.83	9.57	9.01	8.24	50.03	48.79	4.92	4.67
Nov 1.....	0.88	0.92	10.54	10.46	12.21	11.69	52.11	52.07	5.50	5.45
Dec 1.....	0.81	0.94	11.46	11.29	14.42	12.31	53.26	51.93	6.10	5.86
Late (150-150)										
Sep 1.....	(NA)	(NA)	(NA)	(NA)	(NA)	(NA)	(NA)	(NA)	(NA)	(NA)
Oct 1.....	2.09	2.16	8.92	8.81	4.32	4.17	48.57	45.00	4.33	3.97
Nov 1.....	1.53	1.69	9.45	9.29	6.32	5.60	51.56	51.32	4.87	4.77
Dec 1.....	1.37	1.51	10.31	10.10	7.67	6.84	55.06	53.56	5.68	5.41
GRAPEFRUIT										
White Seedless (48-47)										
Sep 1.....	1.63	1.53	10.17	9.92	6.27	6.50	33.79	35.02	3.44	3.47
Oct 1.....	1.37	1.44	9.90	9.83	7.29	6.83	38.54	36.32	3.82	3.57
Nov 1.....	1.32	1.33	10.29	9.89	7.85	7.48	41.68	42.68	4.29	4.22
Dec 1.....	1.33	1.37	10.28	10.02	7.80	7.36	42.70	45.37	4.39	4.55
Colored Seedless (47-48)										
Sep 1.....	1.62	1.52	10.16	10.16	6.30	6.71	35.95	35.32	3.65	3.59
Oct 1.....	1.37	1.41	10.19	10.04	7.44	7.13	39.39	37.55	4.02	3.77
Nov 1.....	1.31	1.34	10.41	10.00	8.02	7.50	42.55	41.91	4.43	4.18
Dec 1.....	1.28	1.33	10.74	10.25	8.42	7.75	44.42	46.70	4.78	4.79

(NA) Not available.

Citrus Maturity Test Averages, by Areas — Florida: December 1, 2010-2011 and 2011-2012

Fruit type (number of groves)	Acid		Solids (Brix)		Ratio		Unfinished juice per box		Solids per box	
	2011-2012	2012-2013	2011-2012	2012-2013	2011-2012	2012-2013	2011-2012	2012-2013	2011-2012	2012-2013
	(percent)	(percent)	(percent)	(percent)			(pounds)	(pounds)	(pounds)	(pounds)
ORANGES										
Early										
Indian River (9-7).....	0.71	0.80	11.49	10.59	16.54	13.96	51.92	53.78	5.96	5.70
Other Areas (97-106).....	0.71	0.73	11.20	10.79	16.03	15.06	51.53	51.39	5.77	5.55
Midseason										
Indian River (11-11).....	0.87	1.01	11.78	11.69	13.72	11.65	54.97	52.56	6.47	6.14
Other Areas (41-44).....	0.79	0.92	11.38	11.19	14.61	12.48	52.80	51.78	6.01	5.79
Late										
Indian River (27-27).....	1.47	1.60	10.41	10.29	7.24	6.51	54.66	52.91	5.69	5.44
Other Areas (123-123).....	1.34	1.49	10.29	10.06	7.77	6.90	55.14	53.71	5.67	5.40
GRAPEFRUIT										
White Seedless										
Indian River (36-38).....	1.35	1.40	10.37	10.14	7.69	7.28	42.13	45.34	4.37	4.60
Other Areas (12-9).....	1.24	1.25	10.03	9.52	8.12	7.68	44.41	45.50	4.45	4.33
Colored Seedless										
Indian River (38-39).....	1.30	1.35	10.82	10.29	8.33	7.70	44.49	46.88	4.82	4.83
Other Areas (9-9).....	1.19	1.27	10.42	10.09	8.77	7.98	44.11	45.88	4.59	4.62

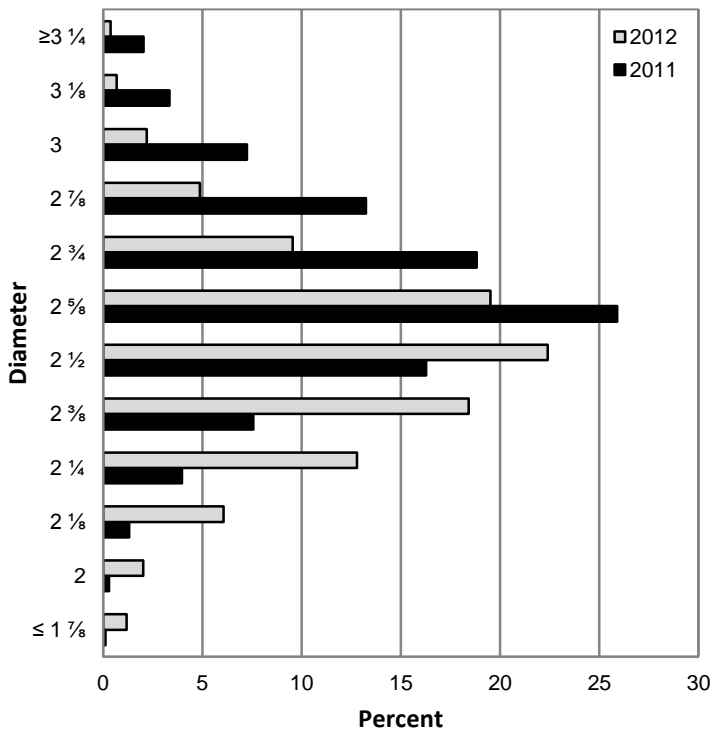
Citrus Size Frequency Measurement Distributions, by Type — Florida: November

Type and number of fruit per 4/5 – bushel containers	2010	2011	2012	Type and number of fruit per 4/5 – bushel containers	2010	2011	2012
	(percent)	(percent)	(percent)		(percent)	(percent)	(percent)
NON-VALENCIA ORANGES ¹				WHITE GRAPEFRUIT ²			
64 or less	0.5	3.5	0.7	32 or less	5.3	10.1	2.6
80	4.4	14.8	4.6	36	15.1	16.3	7.6
100	20.5	38.2	19.8	40	17.7	17.5	9.5
125	38.0	30.3	34.5	48	19.9	18.1	12.5
163 or more.....	36.6	13.2	40.4	56	15.4	11.6	11.6
				63 or more	26.6	26.4	56.2
NAVEL ORANGES				COLORED GRAPEFRUIT			
64 or less	30.4	49.2	43.4	32 or less	2.4	6.2	0.9
80	42.7	33.6	30.8	36	8.8	14.6	4.6
100	20.4	14.5	18.3	40	13.8	18.4	8.4
125	5.1	2.5	5.2	48	18.3	18.7	13.9
163 or more	1.4	0.2	2.3	56	17.5	13.9	13.1
				63 or more	39.2	28.2	59.1
VALENCIA ORANGES				HONEY TANGERINES			
64 or less	1.2	3.6	1.2	80 or less	3.3	12.1	7.7
80	7.0	19.6	7.6	100	15.6	24.7	14.0
100	26.7	38.8	26.5	120	32.9	26.6	23.5
125	37.0	27.0	35.2	176	18.2	12.7	13.3
163 or more	28.1	11.0	29.5	210 or more	30.0	23.9	41.5
TANGELOS				SUNBURST TANGERINES			
80 or less	14.6	45.2	22.9	100 or less	10.7	43.7	7.8
100	31.7	31.7	26.7	120	25.7	22.5	21.6
120	21.7	12.0	25.6	176	22.2	12.1	12.2
156 or more	32.0	11.1	24.8	210 or more	41.4	21.7	58.4

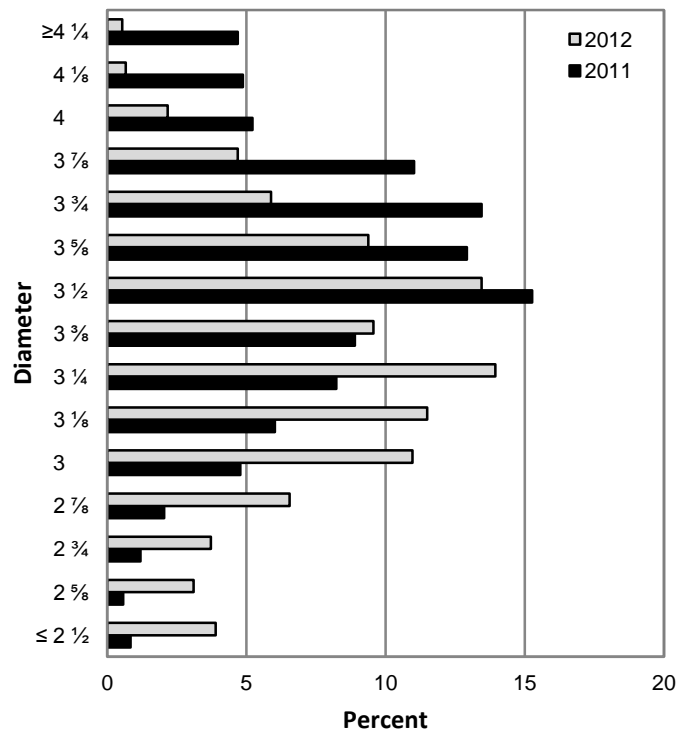
¹ Excludes Navel and Temple varieties.

² Excludes seedy.

Fruit Size Frequency Measurements, Non-Valencia Oranges¹, by Diameter - Florida: November



Fruit Size Frequency Measurements, Colored Grapefruit, by Diameter - Florida: November



¹ Excludes Navel and Temple varieties.